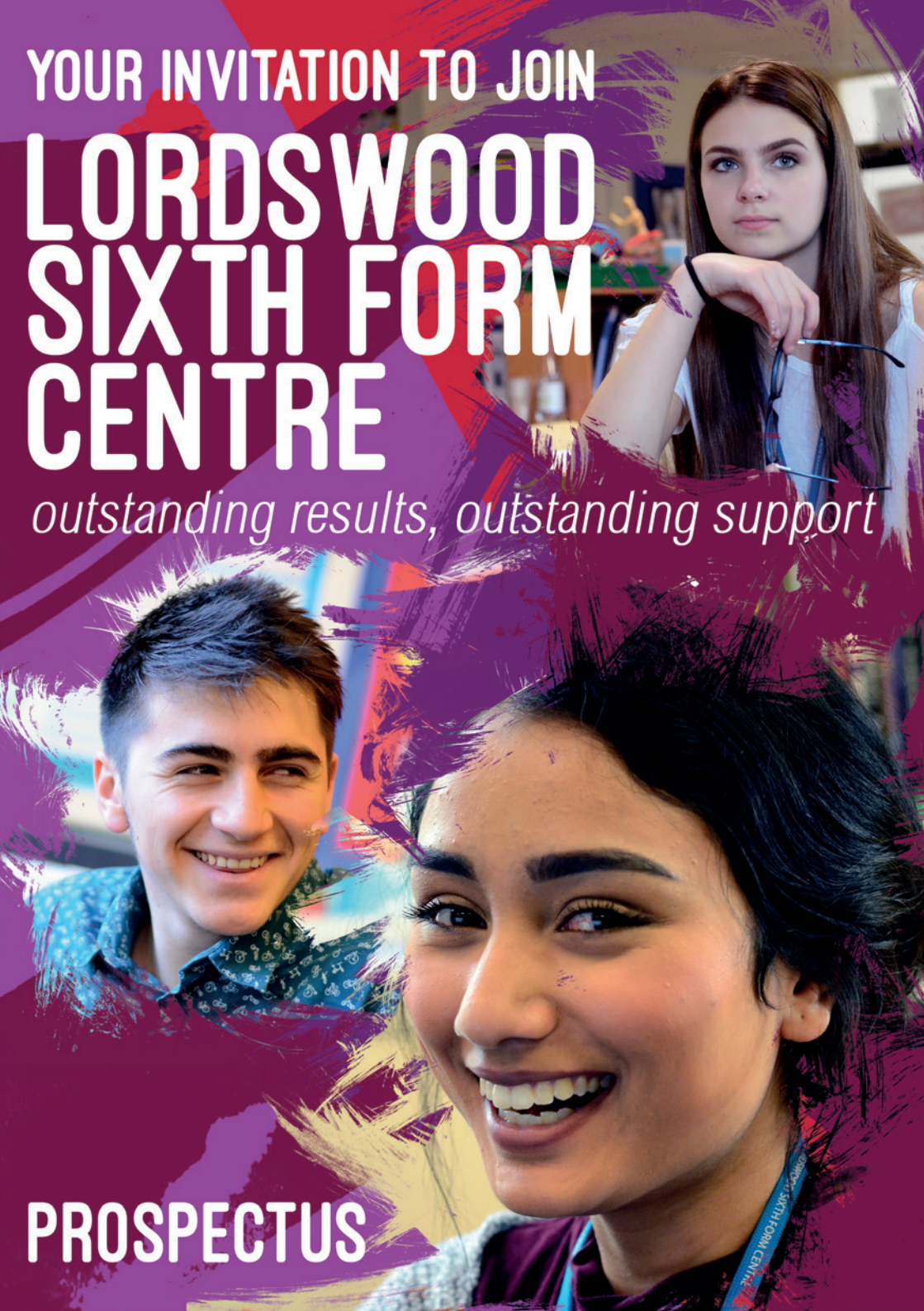


YOUR INVITATION TO JOIN LORDSWOOD SIXTH FORM CENTRE

outstanding results, outstanding support

PROSPECTUS



CONTENTS - THE OTHER STUFF

WELCOME	3
My Lordswood Journey	4
Key Statistics	6
WHY CHOOSE LSFC?	7
Excellent Teaching	8
Excellent Support	8
Enrichment Opportunities	9
Basketball & Cricket Academies	10
Football Academy	11
Post 18 Support	11
Leadership Opportunities	12
Our Successes	12
New Facilities	13
CURRICULUM	14
Course Explanations	15
Pathways	16
Entry Requirements	17
WHAT NEXT?	49
Application Procedure	50
Where To Find Us	51
FAQs	52
Top 10 Reasons to Choose LSFC	53

CONTENTS - THE COURSES

COURSES	
Applied Science	19
Biology	20
Business	21
Chemistry	22
Computer Science	24
Creative & Performing Arts	25
English Literature	26
Film Studies	27
Fine Art	28
French	29
Geography	30
Government & Politics	31
Health & Social Care	32
History	33
IT	34
Mathematics	35
Media Studies	36
Music	37
Philosophy of Religion & Ethics	38
Photography	39
Physical Education	40
Physics	41
Psychology	42
Rock School Music Practitioner	43
Sociology	44
Spanish	45
Sport	46
Maths & English Resits	47
	48



WELCOME

A very warm welcome to prospective students of Lordswood Sixth Form Centre, a co-educational, inclusive and culturally diverse sixth form of around 300 students. We are fully committed to delivering outstanding teaching, pastoral support and careers guidance which is personalised to your needs. The excellent results achieved by our students and their success in gaining places on competitive university and apprenticeship programmes are testament to this commitment. We work hard for you and we expect you to work hard in return, in what is a genuine partnership between students and staff. We hope that you will join our Lordswood family and benefit from, as well as contribute to, our forward thinking and high achieving community.

Jane Götschel

J Götschel
Executive Headteacher



MY LORDSWOOD JOURNEY

REKHA – HEAD GIRL

Studying at Lordswood Sixth Form Centre will, for sure, be the best days of your life. They prepare you for anything and everything and never fail to support you. I've attended Lordswood since Year 7 and have therefore seen the commitment and motivation that is given to every year group. I currently study, biology, psychology, English literature and health and social care and am hoping to study biomedical science at university. What made me stay at Lordswood to pursue my post 16 studies was the diversity and multicultural environment of the sixth form. What I love is that every student is valued here. In addition, I am familiar with the teachers, the resources and the support provided and I was scared that I wasn't going to be able to find this level elsewhere. Throughout the academic year, teachers will give up their time at any point during their free periods and even after-school, to ensure you get the best understanding of your studies. Sixth form isn't just about the learning though, and now that we will have a new sixth form block we will be able to socialise in a new environment forming more connections as students. We have several open days that are organised for us to attend by the sixth form team and external visitors come in to help us become more knowledgeable about our future goals and aspirations. We have regular meetings with review tutors and career mentors to ensure we are feeling the best we can be and these are very beneficial. Students attending the sixth form will always be looked after because we are in an environment filled with caring people.



LAURENC - HEAD BOY

Welcome to the 2018 prospectus for Lordswood Sixth Form Centre, my name is Laurenc and I am the head boy. I joined this sixth form in September 2016 because of its success, and ever since, my time here has been fulfilling and exciting. I study English literature, media studies and film studies. When I was in your position (reading the prospectus two years ago), I admired the students' achievements and got a feeling for the incredible knowledge the teachers must be putting into their lessons. I wanted to be part of this success; there was simply nowhere else in Birmingham like Lordswood. The success of this sixth form is down to one factor, the mindset of everyone. Whether it be teachers, staff or students, the mindset of determination and the desire to do the best possible job in everything. Therefore, that is why I most certainly believe incoming students, such as you, will love Lordswood. You will enjoy yourself by making great new friends due to the close-knit environment. You will enjoy the support and care teachers provide for you and I know you will enjoy the present and contribute to the future success of Lordswood Sixth Form Centre.

WE'RE FANTASTIC! THIS IS WHY...

LORDSWOOD SIXTH FORM STUDENTS HAVE CONSISTENTLY
MADE EXCELLENT PROGRESS AND ACHIEVED TOP RESULTS

100% OF STUDENTS PROGRESSED TO
EDUCATION, TRAINING OR EMPLOYMENT

(0% NOT IN EDUCATION, EMPLOYMENT OR TRAINING - NEEDS)

A LEVEL PASS RATE: 99%

A*-A PASS RATE: 52%

VOCATIONAL PASS RATE: 100%

VOCATIONAL AVERAGE GRADE: DISTINCTION

62% GAINED UNIVERSITY PLACES

RATED OUTSTANDING BY OFSTED 2007





**WHY
CHOOSE
LSFC**

EXCELLENT TEACHING

We offer an outstanding commitment to teaching and learning, inspiring you to go the extra mile in your chosen subjects and to gain the skills for your future studies and careers. We support your transition from Year 11 and help you develop your independence and intellectual curiosity.

We support your learning through:

- Early course suitability reviews to ensure your pathway will lead to success
- One written report per subject each year and termly interim reports
- Parent and student consultation meetings annually and on demand
- Personalised intervention programmes to support your academic journey
- Access to teaching resources through Google Classroom
- Curriculum related visits to local universities
- Study skills sessions

"The attention has made me feel like an individual whose well-being and progress is a high priority."

"The Sixth Form staff are always there with the offer of a cup of tea or a shoulder to cry on if you are having a bad day."

You are very important to us. Whether you are already part of the Lordswood family or are only starting your journey with us, we are fully invested in your success. We make no apologies for our high expectations of you but we are always there to guide and advise you through your challenges and important decisions.

Our personalised support includes:

- An induction to sixth form life
- One-to-one personalised support from your review group tutor
- An assembly and review tutor programme which addresses age appropriate topics
- An 'open door' to the sixth form team
- A member of the sixth form team dedicated to sixth form support
- Referrals to the school nurse or outside agencies for more serious concerns
- Post 18/careers support

EXCELLENT SUPPORT

ENRICHMENT OPPORTUNITIES

We aim to offer you much more than a set of academic qualifications. We want you to extend your passion for your studies beyond the classroom walls and want you to embark on new adventures as well as having the opportunity to carry on with tried and tested activities.

Enrichment opportunities include:

- Film and book clubs
- Visits to enhance your studies - art galleries, Houses of Parliament, local and London theatres, local businesses
- Overseas trips - Disneyland Paris, Ghana
- University visits, lectures and master-classes, Oxbridge, Universities of Warwick, Birmingham, BCU, Aston, Coventry
- Sports clubs
- Games clubs
- Competitions - Lord Mayor's Quiz, photography and art competitions
- Music and drama opportunities

OUR SIXTH FORM PARTNERSHIP WITH THE UCC IN GHANA

Lordswood sixth form students have proudly supported the development of the Underprivileged Children's Centre (UCC) in Ghana through fundraising activities. Each year a group of our students also have an unique opportunity to spend a month teaching in Ghana, immersed in the local culture.

19 years ago Billa started a very basic school under a mango tree in LaBadi, Ghana, encouraging children to study in return for the chance to play football. One man's vision has led to a school catering for almost 200 pupils from the most disadvantaged backgrounds. These students are taught, fed, nurtured, loved and financially supported through to secondary education and beyond. Billa, a football fanatic, also set up several football teams with some young players now getting the opportunity to play abroad.

This is Ado, a student at the UCC in Ghana. He is an unforgettable, joyful young boy but because he has specific learning needs it has been difficult for him to be accepted into one of the local government schools. For many students like Ado, attending a 'free' government school is also unaffordable after paying for the uniforms, the books and food.

"It really is a once in a lifetime experience which reminds us how lucky we are to have such easy access to education."



Ado

We offer a unique opportunity for our students to combine professional quality sports training with academic study. With the building of a new sports facility and an all weather pitch we will be fully equipped to help you to achieve your sporting ambitions.

LORDSWOOD BASKETBALL & CRICKET ACADEMIES

The Lordswood Basketball Academy is the longest running Academy in the region as it is in its twelfth year of success. Over 70 students have combined their personalised academic studies and course choices with professional standard coaching and player development. Lordswood is proud of a record in producing genuine, well-rounded students that work towards a balance of regular competitive sport and achieving their academic potential. We have had over 10 students leave Lordswood to continue onto play professionally across the globe. Lordswood is also proud of having 100% success rate in providing students opportunities to continue in further education, employment or training.

The basketball team currently plays in the West Midlands Mens' Premier Division and Rosebowl competition. Last season, the team won Division 1 with a 15 win and 1 loss record, having an average winning margin of over 49 points. The team also enters the summer leagues and provides competition levels for all abilities.

With the building of the Basketball England approved sports hall, the provision for any potential Basketball Academy students will be further improved and the student progression will only continue to grow.

Alongside the Basketball Academy, Lordswood also runs its own Cricket Academy which is run in exactly the same way.

The emphasis for all sports academy students is on personalised improvement and acquiring a professional sporting attitude.

As a sporting academy student you can:

- Develop your sporting practice alongside other like-minded students
- Gain a qualification in coaching, table officiating or refereeing
- Take part in competitive matches in the region
- Coach younger students
- Be supported by Basketball England and Warwickshire County Cricket
- Enhance your physical and mental well-being

FOOTBALL ACADEMY

Romulus Football Academy has been running professional football training for 16-19 year olds since 1979. If you choose Lordswood Sixth Form Centre you can combine your studies with the following:

- Football coaching sessions three times a week after school (the equivalent hours of coaching a player at a professional club gets)
- A professional coach (all Romulus coaches are fully licensed UEFA A or B Licence coaches, or FA Level 2 coaches)
- Regular matches in the British College League Cat 2. LSFC Romulus players also get the chance to be selected for the Romulus First academy team and play in the Conference Youth Alliance.



We understand there is an increasingly complex range of routes and options to choose from when you leave sixth form. All of our sixth form staff are here to help you make those difficult decisions and to help you take your next steps.

We will provide:

- A dedicated careers adviser on site each week
- Help with work experience placements
- Every student will be allocated a member of staff to help them with the UCAS application process and advise on other post-18 routes
- UCAS workshops and university open-day visits
- Visits from university outreach staff and student finance advice
- A careers fair and workshops delivered by top companies
- Weekly apprenticeship bulletins emailed directly to each student
- Brilliant Club mentoring for high potential students
- Dedicated 'Futures Week' in Year 12
- Access to the Unifrog destination website

POST 18 SUPPORT

LEADERSHIP OPPORTUNITIES

Our leadership programme helps you develop the skills to become leaders of the future. We offer the following leadership opportunities:

- Student Leadership Team
- Head Boy/Girl
- Lunchtime supervisors and receptionist (paid positions)
- Sixth form and whole school student council
- Peer mentorship scheme to support younger students
- Organising charity work

"When our students are given responsibility they act more responsibly – it is so satisfying to witness the origins of so many leaders of the future."

LSFC teacher

Our 2017 students have gone on to study a range of degree subjects including: law, nursing, optometry, psychology, radiography, construction, criminology, accounting and finance, to name a few. Destinations include Russell Group universities such as Leeds, Birmingham and Manchester as well as other highly regarded institutions such as: Aston University, Birmingham City University, Keele, London Metropolitan, Wolverhampton University and Coventry University.

Shane Kennedy joined the sixth form from Lordswood Boys' School. He completed a BTEC extended diploma in music technology gaining three distinctions. Shane's next destination was an apprenticeship with a gunsmith, Westley Ricards Limited, who have been in Birmingham since 1812. Shane's meticulous approach to his BTEC studies will serve him well in this apprenticeship.

Isobel Hinton was a Lordswood Girls' School student who continued her studies into the sixth form. She achieved A grades in chemistry, mathematics and music. Isobel is now studying music at the University of Birmingham where no doubt she will continue to be successful.

OUR SUCCESSES

BRAND NEW BUILDING



Success at Lordswood is without question the result of great teaching and a positive ethos. But we can all agree that having a brand new purpose built sixth form centre will create a more adult and purposeful environment.

The new building will be opening early 2018 and will offer:

- Spacious teaching rooms
- IT facilities
- Sixth Form cafeteria and social space
- Flexible seminar space
- Wi-Fi





CURRICULUM

ADVANCED LEVEL 3 COURSES

The level 3 qualifications offered at Lordswood Sixth Form Centre include Advanced Levels (A levels) and vocational courses including BTECs and Cambridge Technicals.

You can follow traditional pathways and opt to study three or four **A LEVELS**. These courses run over two years and are assessed through a combination of coursework and examinations at the end of the second year.

Level 3 vocational courses are equivalent to A levels and have been developed to help you learn in a practical way about a specific job area. The courses come in different sizes; the **EXTENDED CERTIFICATES** are equivalent to one A level and can be studied alongside other vocational qualifications and/or A levels. The **EXTENDED DIPLOMA** is equivalent to three A levels and is offered as a whole package along with work placement. A large component of the vocational courses is internally assessed, alongside external assessment.



PATHWAYS

There are various pathways available for you depending on your GCSE/level 2 grades.

For each pathway there are average, minimal entry requirements and this information must be used alongside the subject entry requirement sheet when you are making your choices. This will enable you to see if there are subject specific, English and mathematics criteria which must also be met in order for you to follow a particular programme of study.

The foundation pathway is for students who have an average grade of 2 or 3 at GCSE.

With an average grade of 2 at GCSE, students will have the opportunity to follow a two year programme of study which will include a work placement, a choice of a level 2 diploma, and resits in mathematics and English. This will provide the opportunity to progress onto an apprenticeship or employment.

With an average grade of 3 at GCSE or level 2 pass in vocational subjects, students will have the opportunity to follow a one year programme of study which will include a work placement and resits in mathematics and English. This will provide the opportunity to progress onto a level 3/vocational course, an apprenticeship or employment.

Students who have achieved an average grade 4/5 at GCSE or level 2 pass in vocational subjects in at least four subjects will be able to follow a two year course including a choice of extended diplomas or an introductory diploma with an additional A level or extended certificate qualification. There will also be an opportunity to resit GCSE mathematics and English if a grade 4 has not already been achieved. This pathway will enable students to progress to university, an apprenticeship or employment.

There are a number of two year courses available for students who have achieved an average grade of 5 or 6 at GCSE or level 2 pass in vocational subjects. These include A level or equivalent subjects. You will be able to choose three or four subjects and must include at least two facilitating. This pathway will provide the opportunity to progress onto university, an apprenticeship or employment.

ENTRY REQUIREMENTS

Subject	Qualification	GCSE English	GCSE Maths	Subject needed to be studied previously	Subject Specific Grade Requirements
Applied Science	Extended Certificate	5	5	Y	GCSE - 5 in core AND additional science
	Extended Diploma	5	5	Y	GCSE - 5 in core AND additional science
Biology	A Level	6	6	Y	GCSE -6 in biology, chemistry, and physics OR 6 in core AND additional science
Business	A Level	4	5	N	GCSE - 5 or above if studied previously
	Extended Certificate	4	4	N	GCSE - 5 or above if studied previously
Chemistry	A Level	6	6	Y	GCSE - 6 in biology, chemistry, and physics OR 6 in core AND additional science
Computer Science	A Level	4	5	N	GCSE - 5 or above if studied previously
Creative & Performing Arts	Diploma	4		N	GCSE - 5 or above if studied previously
	Extended Diploma			N	GCSE - 5 or above if studied previously
English Literature	A Level	6		Y	GCSE - 6 or above in English language AND 6 or above in English literature
Film Studies	A Level	4		N	An interest in film and film making
Fine Art	A Level	5	4	Y	GCSE - 5 in art
French	A Level	5		Y	GCSE - 6 or above
Geography	A Level	5	4	Y	GCSE - 5 or above
Government & Politics	A Level	5	4	N	GCSE - 5 or above in history or sociology OR 5 in English if history/sociology not studied
Health & Social Care	Extended Certificate	4		N	GCSE - 4 or above and GCSE science 4 or above Vocational level 2 - pass or above
	Extended Diploma	4		N	GCSE - 4 or above and GCSE science 4 or above Vocational level 2 - pass or above

ENTRY REQUIREMENTS

Subject	Qualification	GCSE English	GCSE Maths	Subject needed to be studied previously	Subject Specific Grade Requirements
History	A Level	5		Y	GCSE - 5 in history. If grade 5 is achieved in English, consideration may be depending on history grade achieved
IT	Introductory Diploma	4	4	N	GCSE - 4 or above if studied previously Vocational level 2 - pass or above
	Diploma			N	GCSE - 4 or above if studied previously Vocational level 2 - pass or above
Mathematics	A Level	4	6	Y	GCSE - 6 or above on the higher paper, 6/7 preferable
Media Studies	A Level	4		N	GCSE - 4 or above if studied previously
Music	A Level	5	4	Y	GCSE - 4 or above if studied previously
Philosophy of Religion & Ethics	A Level	5		N	GCSE - 5 or above if studied previously
Photography	A Level	5	4	N	GCSE - 5 if studied previously
Physical Education	A Level	5	4	N	GCSE - 5 or above AND 5 in science or biology
Physics	A Level	6	6	Y	GCSE - 6 in biology, chemistry, and physics OR 6 in core AND additional science
Psychology	A Level	6	6	N	GCSE - 6 or above if studied previously plus grade 6 in science
Rock School Music Practitioner	Extended Diploma	3		N	GCSE - 4 or above if studied previously Vocational level 2 - pass or above An interest in music
Sociology	A Level	5		N	GCSE - 5 if studied previously
Spanish	A Level	5		Y	GCSE - 6 or above
Sport	Extended Certificate	4	4	N	An interest in sport is desired
	Extended Diploma	4	4	N	An interest in sport is desired



COURSES

APPLIED SCIENCE

- National Extended Certificate
- National Extended Diploma

OVERVIEW

The Applied Science course is a two year course for students wishing to enter employment as a science technician or who wish to progress to higher education. You will develop laboratory skills, time management as well as main principles of human biology, laboratory procedures, theory and applications of both chemistry and physics.

WHY CHOOSE THIS?

Successful completion of the course will enable you to progress onto higher education programmes at other institutions or employment. Past students have gone on to study biomedical science, pharmacy, radiography, radiotherapy, nursing, podiatry, biological sciences, audiology, optometry, forensic science, marine biology, human biology, psychology, criminology, computer science, chemical engineering.

AREAS OF STUDY & ASSESSMENT

BTEC National Extended Certificate

Internal assessment 42%, external assessment 58%

Mandatory units:

Unit 1: Principles and Applications of Science

Unit 2: Practical Scientific Procedures and Techniques

Unit 3: Science Investigation Skills

Optional units include:

Unit 8: Physiology of Human Body Systems

Unit 10: Biological Molecules and Metabolic Pathways

Unit 13: Applications of Inorganic Chemistry

Unit 15: Electrical Circuits and their Application

BTEC National Extended Diploma

Internal assessment 58%, external assessment 42%

Mandatory units:

Unit 1: Principles and Applications of Science 1

Unit 2: Practical Scientific Procedures and Techniques

Unit 3: Science Investigation Skills

Unit 4: Laboratory Techniques and their Application

Unit 5: Principles and Applications of Science 2

Unit 6: Investigative Project

Unit 7: Contemporary Issues in Science

In addition, students will complete optional units.

WHAT OUR STUDENTS SAY

BTEC Applied science is a really interesting course, I love the fact you can study all three science disciplines (biology, chemistry and physics) all in one course. The practical work makes things interesting and you get plenty of opportunities to improve your skills. You are taught by a range of teachers who teach within their specialisms which makes it more interesting. Studying BTEC has been a revelation and I have enjoyed every minute of it.



AQA

BIOLOGY

- A Level

OVERVIEW

Biology is a very popular A level. You will study a wide range of concepts and ideas from photosynthesis to DNA replication. A commitment to your studies is essential from day 1 of the course as the initial units underpin many of the more complex theory taught in year two.

WHY CHOOSE THIS?

Biologists are scientists who study the natural world and all the living things in it, from the largest mammals down to our very own microscopic DNA. They try to understand how animals and organisms work (including us humans), how we evolved and the things that can make us sick or improve our health. As with the other sciences, biology helps you to build up research, problem solving, organisation and analytical skills. If you study biology, you will likely find yourself working on group projects, which will help you build your teamwork and communication skills too. Biology is a facilitating A level subject and is highly regarded by universities.

AREAS OF STUDY & ASSESSMENT

You will study eight units of work covering cells, biological molecules, exchange and transport, genetics, biochemistry and response. At least four units will be covered in the first year.

Assessment is via 100% examination at the end of Year 13. You will also complete 12 required practicals which will be assessed within the examinations. There are five practical competencies (CPAC) that you have to have mastered by the end of the course. Your teacher will monitor your work in practical lessons and assess you against the exam board criteria. You will be expected to prepare for each lesson by studying the theory before each lesson and your teacher will assess you at key points throughout the course.

WHAT OUR STUDENTS SAY

I chose to pick biology at A level due to my interest in all living organisms and plants and because of all the career possibilities it opens up. During this course I have learnt a variety of things ranging from DNA bases, cells and how our bodies fight infection, respiration and photosynthesis, evolution and the basic structures of life. I have also built up research, problem solving, and analytical skills which will help me when not only when I move on to university but also help with the rest of my A levels.

- A Level

OVERVIEW

The ever changing climate of the business world is fascinating. The impact of the external environment on organisations, and how they react, illustrates how successful managers/CEOs can be. The influence of finance on business organisations and how money is managed makes the business world a very competitive place. By studying business you could end up being part of a global company helping to provide the best possible service to clients using problem solving, communication and team working skills.

WHY CHOOSE THIS?

Whether you see yourself as an entrepreneur, someone who wants to work for one of the world's largest organisations as a CEO, or just an individual who would like to know more about the world of business, then this course could be for you! Staff have years of experience running their own businesses, working for large organisations and in teaching.

This course is suited to those who will be able to retain information and complete three examined units. A level business focuses on the four functional areas of operations, finance, human resources and marketing. Students will become aware of the importance of aims, objectives and strategy at a corporate and functional level. Students will also become aware of political, legal, ethical, social, environmental and technological issues affecting business decisions.

AREAS OF STUDY & ASSESSMENT

There are 10 units

Unit 1 What is business?

Unit 2 Managers, leadership and decision making

Unit 3 Decision making to improve marketing performance

Unit 4 Decision making to improve operational performance

Unit 5 Decision making to improve financial performance

Unit 6 Decision making to improve human resource performance

Unit 7 Analysing the strategic position of a business

Unit 8 Choosing strategic direction

Unit 9 Strategic methods: how to pursue strategies

Unit 10 Managing strategic change

Units 1- 6 are taught in Year 12

Units 7 - 10 are taught in Year 13

At the end of Year 13 there are three examinations

Each examination is worth 100 marks

Each examination is worth 33% of the overall A level

WHAT OUR STUDENTS SAY

Studying business at A-level was a very important step in my journey as a young professional. At first, I wasn't sure of my hopes and aspirations but learning business at Lordswood Sixth Form Centre helped me to develop a goal of becoming successful in the business industry. Business is a part of everyday life so I found it very interesting looking into why businesses make certain decisions to react to changes. In my first year I was able to focus on the four main functional areas in business: finance, marketing, operations and human resources. All were very engaging, as I gained an insight into how very different businesses operate to achieve their corporate objectives and fulfil their mission statement. I especially enjoyed the finance topic, as I was able to develop my maths skills to work out profit margins, break even etc. In my second year we looked at a changing environment and how major components like the economy and competition impact a business' strategy. Overall the course was very enjoyable, with the excellent support from staff helping me to gain a place at Manchester Metropolitan University to study business management.

- Extended Certificate

OVERVIEW

Whether you see yourself as an entrepreneur, someone who wants to work for one of the world's largest organisations as a CEO, or just an individual who would like to know more about the world of business, then this course could be for you!

WHY CHOOSE THIS?

Business is a platform to apply for many related degree courses including business and management, marketing, accountancy, economics and IT based degrees. Studying business can support you when applying to work or study abroad, or for combined degrees in international relations and languages.

Alternatively, students can find paid employment in organisations such as KPMG or apply for apprenticeships including business administration.

AREAS OF STUDY & ASSESSMENT

Unit 1: Exploring Business

Coursework

This unit is worth 25% of the course

Unit 2: Developing a marketing campaign

Controlled Assessment Task

This unit is worth 25% of the course.

Unit 3: Personal and business finance

Examination

This unit is worth 33% of the course

Unit 8: Recruitment and selection process

Coursework

This unit is worth 17% of the course

WHAT OUR STUDENTS SAY

I chose to study business simply because it was one of the subjects that I had a lot of interest for. The course gave me an understanding of how businesses operates in terms of decision making, being cost effective, marketing etc. and allowed me to recognise real life strategies businesses use and their purpose. The amount you can learn in business is extensive, the way businesses run is changing constantly as people are finding better ways to operate and better ideas to adapt existing products/services as well as identifying new customer needs. What I enjoyed most about business studies was learning how important decision making was to keep a business successful and how entrepreneurs use various strategies to save their struggling business. I am currently studying architecture and I believe that business has helped to recognise how I can create designs that cater the needs of the consumers and how architects may use certain aspects in designs to market to their consumer as a USP.

CHEMISTRY

- A Level

OVERVIEW

The course covers topics from three areas of chemistry; organic, inorganic and physical. Throughout the course you will also carry out practical activities including:

- measuring energy changes in chemical reactions
- tests for identifying different types of compound
- different methods for measuring rates of reaction
- studying electrochemical cells
- preparation of organic solids and liquids
- an advanced form of chromatography for more accurate results

WHY CHOOSE THIS?

Chemistry is an important subject for careers in: medicine, environmental science, engineering, toxicology, developing consumer products, metallurgy (studying how metals behave), space exploration, developing perfumes and cosmetics, pharmaceuticals, energy, teaching, science writing, software development and research.

AREAS OF STUDY & ASSESSMENT

Physical chemistry - including atomic structure, amount of substance, bonding, energetics, kinetics, chemical equilibria and Le Chatelier's Principle, thermodynamics, rate equations, the equilibrium constant K_p , electrode potentials and electrochemical cells

Inorganic chemistry - including periodicity, Group 2 the alkaline earth metals, Group 7(17) the halogens, properties of Period 3 elements and their oxides, transition metals, reactions of ions in aqueous solution

Organic chemistry - including introduction to organic chemistry, alkanes, halogenoalkanes, alkenes, alcohols, organic analysis, optical isomerism, aldehydes and ketones, carboxylic acids and derivatives, aromatic chemistry, amines, polymers, amino acids, proteins and DNA, organic synthesis, NMR spectroscopy, chromatography

There is no coursework on this course. However, your performance during practicals will be assessed. There are three examinations at the end of the two years for A-level, all of which are two hours long. At least 15% of the marks for A level chemistry are based on what you learned in your practicals.

WHAT OUR STUDENTS SAY

Chemists conduct experiments to study how elements work in different conditions, test how they mix, and work out what they are made up of right down to the tiniest particle. The results can be ground breaking, colourful, explosive, or almost impossible to see. Chemists use their experiments and knowledge to develop medicines, foods, fabrics and other materials, from neon lights to shatter-proof glass. They also use it to understand the world around us, from why leaves change colour to discovering invisible pollutants in the air. Pick up a can of soft drink and you'll find chemistry everywhere, from the metal can you're holding, to the paint used to cover it and the liquid inside. Just breathe in and out and you're performing a chemical reaction, which is a little scary but pretty great too...



think different COMPUTER SCIENCE

- A Level

OVERVIEW

A level computer science is, above all else, relevant to the modern and changing world of computing.

This course will enable you to apply theory topics learned in the classroom to real-world scenarios. It is a creative subject where you will need to rely on your own ideas to solve problems and design your own systems. This course will give you the best possible start for those of you that are looking to go on to study computer science at a higher level as well as other subject areas that are looking for analytical skills.

WHY CHOOSE THIS?

A level computer science could lead you into a career as a business analyst, database administrator, systems developer or teacher, the list is endless. Even if computing isn't your goal, this subject offers a wide range of skills that are sought after in many other professions looking for creativity, problem solving and innovation.

AREAS OF STUDY & ASSESSMENT

Component 1 [Computer Systems] has a focus on systems architecture, software development, exchanging data alongside legal, ethical, moral & cultural issues.

Component 2 [Algorithms & Programming] focuses on computational thinking.

Component 3 [Programming Project] you will need to analyse the problem, design a solution, implement the solution and give a thorough evaluation.

Component 1 and 2 will be assessed in examinations at the end of Year 13. Component 3 is internally marked.

WHAT OUR STUDENTS SAY

In the world today, technology is becoming an ever more prominent part of our day to day lives. The study of computer science is an incredibly important part of this development and those who go into the area will forever be working within the industry as a result of just how vast it truly is.

The A level lays the foundations of not only the practical side of computer science, but also the inner workings and theory of the topic; a wonderful base for anyone who wants to study the topic further!

Even if you choose not to go into the area after A level, computer science gives you tremendous lifelong skills and will look excellent on any CV just because of the extent of the knowledge learnt. Lordswood offers a great course with expert teachers who supply any student with the resources needed to get the best grade!

I highly recommend computer science at Lordswood!

CREATIVE & PERFORMING ARTS

- Diploma
- Extended Diploma

OVERVIEW

Within creative and performing arts we offer two specialisms. The courses will be taught together but will be tailored to fit the individual student. We have subject specific teachers and spaces as well as strong connections with professionals within the industry. Students can choose either the Acting or Musical Theatre pathway. You can choose between a diploma or an extended diploma.

WHY CHOOSE THIS?

With the skills you learn on this course you could become an actor, comedian, presenter, entertainer, facilitator or teacher. Even if performing isn't your goal, the performing arts offer a wide range of skills that are sought after in many other professions such as communication skills, leadership, public speaking and creativity.

This course is designed to practically explore the creative arts industry and prepare you for professional work. Both courses are accredited on the performance tables and are suitable for anyone wanting to go into the creative arts industry or study at higher education. The course is highly practical with a focus on personal research, keeping detailed logs of sessions and rehearsals and recording a portfolio of work you can use to secure university places or jobs within the industry.

WHAT OUR STUDENTS SAY

I chose creative and performing arts as it's exciting and creative. During lessons we develop our team building, creative and stagecraft skills through rehearsals and performance and analysis skills through evaluating our work and watching live theatre. Every lesson is different and this is something I value. As a group we love learning about drama practitioners and different styles of theatre such as Theatre of the Oppressed, Theatre of Cruelty and Physical Theatre. Teachers always have new and exciting ways in which to develop each of us and build up our skills. I originally went to another college but I came back for the drama department as I missed the teaching and the whole atmosphere.

AREAS OF STUDY & ASSESSMENT

Diploma:

Compulsory Units

Planning for a career in the creative arts; performance preparation; vocal techniques (acting); approaches to acting; audition techniques

Two units on musical theatre and two on acting.

Extended diploma:

Compulsory Units

Planning for a career in the creative arts; performance preparation; final production; audition techniques

Two units on musical theatre and two on acting.

Performance Preparation is an externally assessed unit in which you will choose, plan, create, rehearse and perform in a production to a live audience.

Planning for a career requires you to create a portfolio of work, research into different careers in performing arts, complete a work experience placement and a professional profile.

ENGLISH LITERATURE

- A Level

OVERVIEW

A level English literature is a relevant, engaging and up-to-date course that approaches the study of literature through the lens of historicism, encouraging the independent study of a variety of texts within a shared context, giving logic and meaning to the way that texts are grouped for study. This unifying approach facilitates the inclusion of a range of wider reading that will extend your experience and appreciation of literature. Offering clear progression from GCSE, this course will allow you to build on the skills and knowledge already gained and prepare for your next steps. The variety of assessment styles used, such as passage-based questions, unseen material, single-text questions, multiple-text questions and open and closed-book approaches will allow you to develop a wide range of skills, such as the ability to read critically, analyse, evaluate and undertake independent research which are valuable for both further study and future employment.

WHY CHOOSE THIS?

With the knowledge and skills obtained you could pursue a career in journalism, writing, advertising, law, teaching and many others that require creativity, effective written and oral communication, analytical and evaluative skills as well as the ability to develop thoughtful and convincing lines of argument and interpretation.

AREAS OF STUDY & ASSESSMENT

There are two examination papers. Each paper is worth 40%. There is one NEA (non-examination assessment) comparative essay worth 20%.

Paper 1 – Love through the Ages (40%)
Shakespeare, love poetry, *The Great Gatsby*.

Paper 2: - Texts in Context – Modern Literature from 1945 to present day (40%)
Modern poetry, *A Streetcar Named Desire*, *The Color Purple*.

NEA – Independent Comparative Study (20%) One comparative essay on a pair of texts of the student's choosing. One text must have been written before 1900.

WHAT OUR STUDENTS SAY

English literature is a challenging and fascinating course. Even if you believe that your strengths are mainly in mathematical or scientific subjects, it will broaden your interests and demonstrate your aptitude in a different area. It will identify you as someone with a penetrating, analytical mind who has the ability to reflect on ideas, construct coherent, authoritative arguments, analyse different literary texts and engage with universal themes and writers' intentions. I thoroughly enjoyed the discussion and the set texts. Also, the support and feedback that is provided by the teachers is second to none.



FILM STUDIES

- A Level

OVERVIEW

This course is perfect for anyone with a love of all things to do with film. You will be introduced to a wide range of films from the early silent films of the 1920s to the latest Hollywood offerings such as *Star Wars: The Force Awakens* or *Jurassic World*. You will also critically engage with foreign language films; historical film movements such as German Expressionism or the French New Wave and short and documentary film forms. No film studies course would be complete without the chance to make your own film, and as part of the course you will get the chance to script, film and edit your own short film.

WHY CHOOSE THIS?

This is a fun course that combines academic study with practical tasks. Studying this course will open your eyes to the power of film to entertain, inform and emotionally engage audiences. You will encounter a wide range of critically acclaimed films and learn about different cultures, societies and time periods through the study of both British and global films. You will also develop your own film-making skills. Film studies is an excellent accompaniment to other creative and discursive subjects such as media studies, English, photography, history, sociology, computing.

AREAS OF STUDY & ASSESSMENT

Component 1: Film History

You will develop knowledge of film form through the study of at least three US set films.

You will also study set films from two major European film movements or stylistic developments.

Written examination: 35% of qualification

Component 2: Critical Approaches to Film

You will study at least one set film from various categories.

Written examination: 35% of qualification

Component 3: Making Short Film

You will make your own 5 minute short film or a 10 minute screenplay for a short film.

Non examined assessment (coursework): 30% of qualification

WHAT OUR STUDENTS SAY

As well as being able to write detailed analyses on the films I know and love, I have been able to enhance my English skills and to delve into a world that opens my eyes to all the aspects of film I once missed; instead of just enjoying the story; I get to see sides of the film industry I've never even noticed before.

- A Level

OVERVIEW

The fine art A level teaches you a broad range of artistic skills whilst allowing you the freedom to choose topic themes and develop techniques which are of most interest to you. The course encourages you to try media from a range of artistic discipline areas such as drawing, illustration, painting, print making, photography and digital media and teaches you how to analyse artistic imagery.

WHY CHOOSE THIS?

Students who enjoy practical, creative subjects should choose to study fine art. Those who value the opportunity to express their ideas and opinions through artistic materials and techniques and any students who enjoy developing new ideas. Fine art can give you an excellent basis for improving your communication skills and can help you to develop resilience and independence.

Students with an A level in art have progressed to degree programmes in areas such as fashion, architecture, photography and fine art. The analytical, communication and research skills you develop would be useful for courses like history, religious studies or English literature or you could use your skills to teach or help people through courses such as art therapy.

AREAS OF STUDY & ASSESSMENT

You will begin the course in an experimental manner through individual workshop based lessons which will introduce you to a broad range of materials, techniques and processes. This area of study lasts a term and a half and is designed to ensure that you can make independent decisions about which media to specialise in for component 1; the personal investigation.

Component 1 is started in the spring term of Year 12 and is an extended project, the theme of which is decided by each student. During this project you will specialise in one or more artistic disciplines and will have the opportunity to research artists of interest to you within a 1000-3000 word essay. This is worth 60% of your overall marks.

Component 2 is started in the February of Year 13 and is an externally set unit of work which requires you to work through a set project brief in a short amount of time, culminating in a 15 hour examination period in which to make a final piece. This component is worth 40% of your overall mark. All work is internally marked using grading criteria published by AQA and then moderated by a visiting moderator.

WHAT OUR STUDENTS SAY

Choosing to study fine art at A level was a decision that required no deliberation. Art has allowed me to explore more creative concepts and to think more carefully about why I make certain choices such as orientation, where I place certain pictures or whether I use colour in my artwork. The support provided allowed me to develop my skills over the two years immensely, I was given loads of feedback consistently which allowed me to reflect on my work and hence improve and make my work a higher standard. I am currently studying architecture at Birmingham City University. Fine art A level has provided me with the skills to be able to draw using a range of media and to think creatively when developing new ideas or concepts. Not only that, the course has also given me skills in reasoning and using sources to support my views.

FRENCH

- A Level

OVERVIEW

The French A level qualification has been developed to inspire all students who have an appreciation of the language, literature, film and culture of the French-speaking world. This course features familiar and popular themes as well as content that provides clear links to some of the most fundamental and interesting aspects of the culture of the target language country and communities.

WHY CHOOSE THIS?

The aim of the A level modern language course is to help you to develop an interest in speaking a foreign language, to gain awareness of the need to speak foreign languages, to appreciate the nature and diversity of different cultures and people and to acquire knowledge, skills and understanding for practical use, further study and employment.

Employers often require an understanding of other cultures, good oral communication skills and the discipline and work ethic that learning a language entails. Languages can lead to a wide range of professions, for example: interpreting, translating, working in public and private businesses, law, engineering, politics, computing, travel and tourism, teaching and journalism. Languages are an invaluable skill to have; they are key to the exciting multinational world we live in!

AREAS OF STUDY & ASSESSMENT

Year 12

Theme 1: Social issues and trends: Evolving society in France

Theme 2: Political and/or intellectual and/or artistic culture in Francophone countries

Year 13

Theme 3: Social issues and trends: Immigration and the French multicultural society

Theme 4: Political and/or intellectual and/or artistic culture: The Occupation and Resistance

Paper 1: Listening, reading and translation

2 hours

40% of the qualification (80 marks)

Paper 2: Written response to works and translation

2 hours and 40 minutes

30% of the qualification (120 marks)

Paper 3: Speaking

Internally conducted and externally assessed

Total assessment time: between 21 and 23 minutes (including 5 minutes' preparation time)

30% of the qualification (72 marks)

WHAT OUR STUDENTS SAY

I liked the list of books and films instantly. A good spread of traditional and new pieces of various genres and levels of difficulty. There should be something of interest for every teacher and student.

Whatever path you eventually take, there is no doubt that studying languages will give you the edge.

- A Level

OVERVIEW

Geography is a unique subject because it looks at both the physical structure of the planet and the social structure (i.e. how we affect our environment and how it affects us) in the past, present and future. Geography is also a facilitating subject which means that it can be useful for a whole range of university courses and will help you keep your options open.

WHY CHOOSE THIS?

Candidates with A level geography have access to a wide range of possible careers and higher education opportunities. Skills that you develop include collecting analysing and interpreting data, communicating your findings and developing links between different parts of the subject. Geography graduates are some of the most employable of all graduates. Employers like geography graduates because of their broad skills base and understanding of the world that we live in. Traditional geography careers include: town planner, meteorologist, climatologist, volcanologist, tourism, teaching, civil servant, environmental agencies, water and forestry commissions, and resource management. However, being a geography graduate is not restrictive, geography graduates can easily enter other careers, including: journalism, business, law, accountancy, banking and insurance.

AREAS OF STUDY & ASSESSMENT

Component 1: Physical Geography

Section A: Water and carbon cycles

Section B: Coastal systems and landscapes

Section C: Hazards

Component 2: Human Geography

Section A: Global systems and global governance

Section B: Changing places

Section C: either Contemporary urban environments

Component 3: Geographical Investigation

Students complete an individual investigation which must include data collected in the field. The individual investigation must be based on a question or issue defined and developed by the student relating to any part of the specification content.

Component 1 & 2

Written exams: 2 hours 30 minutes

80% of A level (40% each)

Component 3

3,000 – 4,000 word Geographical Investigation

20% of A-level

WHAT OUR STUDENTS SAY

I think geography is great, it challenges the brain and makes you think about the little things. It's also so much more than about geography, it contains different elements that blend together for a better more fulfilling experience. I took A level geography because I enjoyed the learning and the thoughts behind it, it's a good course that gives you the skills for everything. The things I have learnt in geography can be used in many different areas of my future, for example, I can be more confident and find it easier to think about the reasoning behind certain aspects. It's also helped improve my English skills and allows you to become a more rounded person.



GOVERNMENT & POLITICS

- A Level

OVERVIEW

This course requires the study of British and American politics, in addition to a range of political ideologies.

Unit 1: UK Politics & Core Political Ideas

Unit 2: UK Government & Non-Core Political Ideas

Unit 3: Comparative Politics

WHY CHOOSE THIS?

Students with an A level in politics have progressed to degree programmes in areas such as: politics (domestic and foreign), law, international relations, history, journalism, archaeology, American studies and education. As a 'facilitating' A level, government and politics will be given high consideration when applying for any university course so long as you meet the course core requirements. For example, some politics students are now studying pharmacy and medicine.

By the end of your A level you will be able to analyse and evaluate political institutions, processes and behaviour, political arguments and explanations and have a deeper understanding of the relationship between institutions, processes, ideologies, concepts, behaviour and values.

WHAT OUR STUDENTS SAY

I would really recommend politics as an A level to anyone who wants to deepen their understanding of current affairs and how and why our government functions the way it does. It is valued highly by universities and it can lead to a whole range of career options - not just a politician! You need to be a student who enjoys debating issues and considering issues from different points of view. I particularly like discussing controversial issues and exploring the range of opinions. I have become an expert in lots of different areas of politics, from how the government works to controversial social issues and it makes me feel more intelligent and informed outside of school. I really enjoy explaining to my parents and friends the stories that appear on the news. If you take an interest in current affairs, then researching contemporary examples of the topics covered in lessons comes naturally! My writing style has also really improved due to politics and I have learnt how to develop my arguments with more sophistication and a much better vocabulary.

AREAS OF STUDY & ASSESSMENT

Unit 1: UK Politics & Core Political Ideas

Democracy and participation, political parties, electoral systems, voting behaviour and the media, liberalism, conservatism, socialism

Unit 2: UK Government & Non-Core Political Ideas

Constitution, parliament, Prime Minister and executive, relationships between the branches, feminism

Unit 3: Comparative Politics

US Constitution and federalism, US Congress, US presidency, US Supreme Court & US civil rights, US democracy and participation, comparative theories

In Year 12 you will study US politics and UK politics.

In Year 13 you will study UK government and political ideologies.

You will be assessed by three, two hour examinations, one for each unit, each worth 33.3% of your final grade.

HEALTH & SOCIAL CARE

- Cambridge Technical Extended Certificate
- Cambridge Technical Extended Diploma

OVERVIEW

The focus of the diploma course in health and social care is varied and, although designed to skill you up for a career in health and social care, will also provide you with transferable employment skills, enabling you to follow a variety of career paths in the future. You will have the opportunity to work collaboratively with others presenting seminars and producing work in a range of styles. You will develop your problem solving and critical thinking skills through the analysis of a variety of health and social care case studies.

WHY CHOOSE THIS?

There are many roles available in the health and social care sector where you can make a difference to people's lives. The demand is growing for skilled nurses, midwives, healthcare workers, social workers, physiotherapists and other allied health professionals. You can go directly into employment, study for a degree or follow an apprenticeship pathway.

AREAS OF STUDY & ASSESSMENT

During the course you will be studying the health and social care sectors' involvement in the care and support of individuals throughout their whole life. This will include how their needs change over time, the skills and behaviours a health and social care practitioner is required to develop, anatomy and physiology and safeguarding.

Cambridge Technical Extended Certificate is made up of seven units, three of which are externally assessed, examinations are worth 58% of the course, with coursework at 42%.

Examined units are as follows :

Unit 2 Equality, Diversity and Rights in Health and Social Care
Unit 3 Health, safety and security in health and social care
Unit 4 Anatomy and physiology for health and social care

Cambridge Technical Extended Diploma is made up of 18 units, six of which are externally assessed, examinations are worth 42% of the course, with coursework worth 58%.

Examined units are as follows :

Unit 2 Equality, Diversity and Rights in Health and Social Care
Unit 3 Health, safety and security in health and social care
Unit 4 Anatomy and physiology for health and social care
Unit 6 Personalisation and a person-centred approach to care
Unit 7 Safeguarding Unit
Unit 25 Research methods in health, social care and childcare

WHAT OUR STUDENTS SAY

In the future I aspire to be a nurse, I chose health and social care as it is a subject that includes all the elements and characteristics to support my goal. At first I was nervous and scared about the workload, however the support from the teachers has kept me going.

Health and social care is a good subject to pick as it will open a lot of doors in your life. However you will need to be open to hard work and good organisation. Also it is a really good subject that I enjoy learning about as I know it will help with my dream job.



OCR

Nelson Mandela
1918-2013

HISTORY

- A Level

OVERVIEW

The new A level requires the study of British and global history as well as units which cover a period of 200 years.

Unit 1: Lancastrians, Yorkists and Henry VII (1455-1485)

Unit 2: Apartheid and Reconciliation: South African Politics 1948–1999

Unit 3: The Middle East 1908–2011: Ottomans to Arab Spring

Unit 4: The Cold War

WHY CHOOSE THIS?

Young children constantly ask ‘why?’ as they seek to make sense of the world. For a historian this should still be your favourite question. Over the course of your A level studies we will help you to understand ‘why?’. As part of this learning journey you will

- explore how different factors cause historical events
- explain why interpretations of history change over time
- identify parallels and differences between different periods and topics in history
- interpret a range of primary and secondary source material
- craft analytical and relevant essays with an increasing mastery of vocabulary
- develop your independent research skills

By the end of your A level you will have acquired a deeper understanding of key historical events and processes, enabling you to apply your evaluative skills to other aspects of the past as well as the present.

WHAT OUR STUDENTS SAY

I would really recommend an A level in history to anyone who has a genuine interest in the past or in current affairs. It is one of the most highly valued humanities qualifications by universities and it can lead to a whole range of career options, not just a history teacher! You need to be a student who has an inquiring mind and who is willing to act on your own initiative to find out the detail of the topics studied. I’m going to university to study history for three more years but, even if that wasn’t my path, I wouldn’t regret studying history at all. It has made me much more questioning and evaluative about everything I see and hear in life.

AREAS OF STUDY & ASSESSMENT

Unit 1 and Unit 2 are taught in Year 12

Unit 1:

Wars of the Roses 1445-1461

The Reigns of Edward IV and Henry VI

The Reign of Richard III

The Reign of Henry VII

Unit 2:

Establishing apartheid

The development of apartheid and growing resistance

The collapse of apartheid 1978-1989

A new South Africa 1989-1999

Unit 3 and Unit 4 are taught in Year 13

Unit 3:

The Role of the Great Powers in the Middle East

Zionism, Israel and the Palestinian Issue

Religion, ethnicity and political minorities

Statehood and Pan-Arabism in the Middle East

Unit 4:

Guided teaching on the beginnings of the Cold War in preparation for independent investigation focused on the historiography of the Cold War



IT I think different

- Cambridge Technicals Introductory Diploma
- Cambridge Technicals Diploma

OVERVIEW

This vocational qualification is designed with the workplace in mind and will provide you with the knowledge and skills required for entry into employment and the community as a whole. The course has been designed to be up to date, engaging, fit for purpose and suitable for the needs of students in 2018.

WHY CHOOSE THIS?

You will apply your skills and knowledge practically in preparation for further study, apprenticeship or employment. You will be able to apply for pathways that require communication, problem solving, time management, research and analytical skills.

AREAS OF STUDY & ASSESSMENT

In Year 12 you will study Unit 1 (Fundamentals of IT) where you will develop an understanding in computer hardware, computer software, IT employability skills and, threats to IT systems. You will also study Unit 2 (Global Information) in Year 12 with a focus on how information is held globally, information styles, legal framework of storing information globally and the principles of information security.

Cambridge Technicals Introductory Diploma:

In Year 13 there will be a focus on the role of an IT technical practitioner where you will design a network to meet the requirements of the client and support clients when they have technical IT issues. You will create a product for a client which follows the system life cycle. In total there are five units that you will study over the two years, examinations are at the end of Year 12.

Cambridge Technicals Diploma:

In Year 12 you will also complete units with a focus on mobile technology, the Internet of Everything and developing a smarter planet.

In Year 13 There will be a focus on the role of an IT technical practitioner where you will need to select hardware and software to meet a client's needs. In total there are eleven units that you will study over the two years, examinations are at the end of Year 12 and in January of Year 13.

WHAT OUR STUDENTS SAY

This course, is very hands on as we have both practical and technical work. The teachers are very supportive and promote learning in a fun way. As students, we have developed our technical understanding in IT. During the two years we have learnt the different aspects of IT and the effects it has on modern day life. Overall, we enjoy the lessons as they are fun, productive and full of energy.

I love my IT lessons, they are a a fun and interactive way for me to learn about the way the world is developing with technology and all of its implications, by doing IT I feel more aware of these developments.

MATHEMATICS

- A Level

OVERVIEW

You will cover the essential pure mathematical methods that can be applied to real world scenarios. Topics include solving equations, graphs and transformations, coordinate geometry, logarithms and exponentials, trigonometry and differentiation and integration. You will also develop an in-depth knowledge of statistics, focusing on the representation and analysis of data, probability, probability distributions, linear correlation and linear regression.

WHY CHOOSE THIS?

Mathematics is not only a beautiful and exciting subject in its own right, but it also underpins many other branches of learning. It is the language of science, technology and engineering. Mathematics is essential for architecture and design as well as economics and medicine, even art relies on mathematics to some extent. If you enjoy solving problems, logical analysis and have a creative streak, you should certainly consider studying the subject at a higher level. A good pass at A level mathematics will be looked on very favourably by universities, even if mathematics is not directly related to your chosen course.

AREAS OF STUDY & ASSESSMENT

Year 12

Pure 1 - algebra and functions; proof; coordinate geometry; sequences and series; exponentials and logarithms; differentiation; trigonometry; vectors; integration
 Statistics - sampling; data representation and interpretation; probability; statistical distributions; hypothesis testing
 Mechanics - quantities and units in mechanics; kinematics; exponential and logarithms; forces and Newton's Laws

Year 13

Pure 2 - proof; algebraic and partial fractions; functions and modelling; series and sequences; the binomial theorem; trigonometry; parametric equations
 Statistics - regression and correlation; the normal distribution; probability
 Mechanics - moments; forces at any angle; application of kinematics; further kinematics

100% examination at the end of the two-year linear course
 Paper 1: Pure Mathematics, 33%, 2 hours, 100 marks
 Paper 2: Pure Mathematics 33% 2 hours 100 marks
 Paper 3: Mechanics and Statistics 33% 2 hours 100 marks

WHAT OUR STUDENTS SAY

The teachers were incredibly supportive and helped me to manage the transition from GCSE to A level maths. I enjoyed studying new areas of maths and feel as though I have developed a deep understanding of the core aspects of the subject. There was plenty of time in lessons to ask lots of questions and talk to the teacher, which really helped keep me interested and engaged in the subject. Whilst studying maths at Lordswood I had the opportunity to participate in the UKMT Senior Challenge, the competitive nature of this really motivated me to work on my problem solving skills and allowed me to work in a team to improve my key skills.

MEDIA STUDIES

- A Level

OVERVIEW

You will explore a wide range of media texts from TV dramas like *The Bridge* and *Sherlock* to online VLogs such as *Zoella* and *Attitude*. You will engage with the key critical theories and apply them to the media texts you study. You will also learn how to create your own media products using up-to-date digital equipment. By the end of the course you will have developed a wide range of practical skills as well as a keen critical perspective on the media industry and its products.

WHY CHOOSE THIS?

If you are interested in the world we live in; have a curious and creative mind and want to know how the media influences our lives, this is the course for you. You will study all your favourite media forms and make your own media products as well as developing excellent transferable skills.

AREAS OF STUDY & ASSESSMENT

Component 1 Media Products, Industries and Audiences

Section A: Analysing Media Language and Representation

This section assesses media language and representation in relation to two of the following media forms: advertising, marketing, music video or newspapers.

Section B: Understanding Media Industries and Audiences

This section assesses two of the following media forms – advertising, marketing, film, newspapers, radio, video games – and media contexts.

Written examination: 35% of qualification

Component 2: Media Forms and Products in Depth

Section A: Television in the Global Age

Section B: Magazines: Mainstream and Alternative Media

Section C: Media in the Online Age

Written examination: 35% of qualification

Component 3: Cross-Media Production

A practical cross-media production to a set brief. Briefs include:

Television: a sequence from a new television programme and related print products.

Advertising and Marketing: Music – an original music video and print products for a new or local/unsigned artist or band

Advertising and Marketing: Film – a print marketing campaign for a new film

Non examined assessment (coursework): 30% of qualification

WHAT OUR STUDENTS SAY

A level media studies open a whole new window into your future opportunities. I'd recommend the subject to anyone who has a creative mind and has wanted to expand on it. Media studies invites you to see how everything works, and why it works that way; watching a music video, looking at a poster on the wall and wondering how they achieved is fun, but it is nothing compared to being the one who makes products; it's a different world.

- A Level

OVERVIEW

The music A Level course allows you to develop the knowledge and skills necessary for further study of music at a university or conservatoire. If you have a real passion for music, studying at A level will expand and develop your passion whilst widening your knowledge and understanding of composers, genres and eras.

WHY CHOOSE THIS?

The course allows for you to play to your strengths, adjusting the emphasis on composing or performing depending on your preference and ability. The rest of the course aims to develop listening skills for which you have a mixture of set works and unprepared material. Again there is flexibility in which set works you study choosing between musical theatre, jazz and rock/pop as your specialism.

With the skills you learn in A level music you will have an excellent foundation for any role in the music industry (further specific training may be required). The music business is a vast, vibrant and varied industry, employing huge numbers of people and generating billions every year globally. Music can also be a supporting A level for many other pathways such as medicine and law.

WHAT OUR STUDENTS SAY

Music A level allows you to develop your performing, listening, analysis and compositional skills. It is enjoyable and it allows you to think in a completely different way. The course allows you to explore a wide variety of genres and music styles that you wouldn't necessarily listen too. So not only do you study classical pieces by Bach that one might associate with studying music, but, you also get to study contemporary, world and film music. Additionally, you receive a free music lesson per week which means you can either learn a new instrument to widen your musical abilities or have more lessons on your primary instrument to develop your playing.

The music teachers at Lordswood are very knowledgeable and they all specialise in different areas in music which means you receive expert teaching on each area of music. The teachers are dedicated, welcoming and are always willing to help you if you struggle with anything – their office is always open for any help or advice that you may need, even if it's not specifically about music. I would highly recommend studying A level music, especially at Lordswood because of the teaching quality, the friendliness of the department and the extra opportunities studying music at Lordswood brings you.

AREAS OF STUDY & ASSESSMENT

Component 1: Performing – Non-exam assessment, externally assessed by a visiting examiner

Option A (35%) Total performance duration 10-12 minutes

A Performance consisting of a minimum of three pieces.

Option B (25%) Total performance duration 6-8 minutes

A Performance consisting of a minimum of two pieces

Component 2: Composing – Non-exam assessment, externally assessed by an examiner

Option A (25%) Total duration of compositions 4-6 minutes

Two compositions.

Option B (35%) Total duration of compositions 8-10 minutes

Three compositions.

Component 3: Appraising – (40%) 2 hours 15 minute written examination

The written examination focuses on three areas of study

Area of study A: The Western Classical Tradition

Area of study B: One of the following options:

Rock and Pop (1960-2000); Musical Theatre; Jazz (1920-1960)

Area of study C: Students will explore music in the 20th Century.



PHILOSOPHY OF RELIGION AND ETHICS

- A Level

OVERVIEW

A level philosophy of religion and ethics develops your skills in critical analysis of the influence of beliefs and theories, textual interpretation of the Bible and evaluating the success of ethical and philosophical theories. Your teachers will ensure you are fully prepared for your examination in both technique and thorough knowledge of the content. The department will also offer many exciting opportunities to develop your studies, including visits to local universities and places of worship, master class revisions sessions, team research challenges and the chance to lead the RE team in their extra-curricular club for younger students.

WHY CHOOSE THIS?

The transferable skills developed on this course, such as analysis, evaluation and understanding the various influences on human behaviour and thought would benefit any career in public services including the education, health care, journalism, law, civil service, human resources, public relations, law enforcement sectors as well as many others.

AREAS OF STUDY & ASSESSMENT

Year 12

Component 1: Philosophy of Religion and Ethics

Section A: Philosophy of religion

Section B: Ethics and religion

Component 2: Study of Religion and Dialogues

Section A: Study of religion

Section B: The dialogue between philosophy of religion and religion

Section C: The dialogue between ethical studies and religion

The A level in philosophy of religion and ethics is 100% examination assessed so there is no coursework or controlled assessment.

Two written examinations, three hours each at the end of Year 13.

100 marks per paper

Each paper is worth 50% of A-level

WHAT OUR STUDENTS SAY

Ethics and philosophy has increased my knowledge of religion and issues that occur in modern day. I have enjoyed ethics the most as I have learnt new things about issues such as abortion and embryo research. This course ties in with my other subjects such as psychology as I became more aware of ethical issues that affect wider subjects.

Studying philosophy of religion and ethics has provided me with knowledge so that I am open minded and open to everyone's beliefs and opinions. I have really enjoyed ethics as it relates to situations that are happening right now such as embryo research and the debate over capital punishment.

Studying this course at A level has prepared me for post 18 because it has ignited interest in the subject which I now intend to pursue at university. I have really enjoyed relating religion, morals and ethics to modern day issues such as abortion. Philosophy of religion and ethics has also allowed me to approach business from a religious perspective as I understand that ethics within business are heavily influenced by religion. I have also found looking at sociology from a religious perspective as it has made me consider questions such as "is religion a social construction implemented to control society's members?"



AQA

PHOTOGRAPHY

- A Level

OVERVIEW

In photography, you will be introduced to a variety of practices exploring lens-based and light-based media. A range of traditional and new technologies are explored, along with exciting experimental photographic image making techniques. You will explore relevant images, artefacts, artists and resources relating to lens-based and light-based media from the past and present, including examples from around the world. These are integral to investigating and developing stages of your independent study, and open up ways into examining your own ideas. Work is presented in sketchbooks or digital portfolios in a sophisticated manner to clearly demonstrate meaning. Your investigation will be resolved in the form of final, edited photographic images, installations, sculptures and more.

WHY CHOOSE THIS?

Students who enjoy practical, creative, contemporary, imaginative subjects should choose to study photography. Those who value the opportunity to express their ideas and opinions through visual studies and photographic techniques, and any students who enjoy developing new ideas will enjoy this course. Photography can give you an excellent basis for improving your communication skills and can help you to develop resilience and independence.

AREAS OF STUDY & ASSESSMENT

You will begin the course in an experimental manner through individual workshop based lessons which will introduce you to a broad range of materials, techniques and processes. This area of study lasts a term and a half and is designed to ensure that you can make independent decisions about which photographic specialism to focus on for component 1; the personal investigation.

Component 1 is started in the spring term of Year 12 and is an extended project, the theme of which is decided by each student. During this project you will specialise in one or more photographic disciplines and will have the opportunity to research artists of interest within a 1000-3000 word essay. Component 1 is worth 60% of your overall marks.

Component 2 is started in the February of Year 13 and is an externally set unit of work which requires you to work through a set project brief in a short amount of time, culminating in a 15 hour examination period in which to make a final piece. This component is worth 40% of your overall mark.

All work is internally marked using grading criteria published by AQA and then moderated by a visiting moderator.

WHAT OUR STUDENTS SAY

I chose to study photography because I find it fascinating and I wanted to explore life in a photographic way so I could interpret the photograph in my own way and other ways. I enjoy studying photography because the majority of the lessons are practical and in those lessons I explore and experiment with different and new materials, artists etc. It has helped me to develop a new perspective of the world. My favourite lessons are when I get to use the darkroom to experiment with film as I find it mesmerising to watch the prints being slowly developed. Using the film camera and developing them in a darkroom were skills that I have newly developed in this subject. Photography has given me a different perspective when viewing photographs and has made me see people, lifestyles and the world in a different way.

PHYSICAL EDUCATION

- A Level

OVERVIEW

Do you have an interest in health, fitness or sport? Are you inspired by one of the fastest growing global industries? Do you have the components to be an elite level performer? If you have a passion for sport then through this course you will enjoy exploring the history of sport, how your body responds to exercise and why you do not always perform at your best for an important game or competition.

This diverse course allows you to develop your own sporting ability, whilst bridging the divide between the arts and sciences. The PE department at Lordswood will help to support each student through both the theoretical and practical components, encouraging students to learn the excellence required to perform at the elite level of sport and inspire students to develop their own ethos for success within the sixth form.

WHY CHOOSE THIS?

The A level in physical education is taught by very knowledgeable and motivated staff who will help provide every possible opportunity for students to be successful. It will give students the opportunity to study a more practical subject that compliments other A level choices very well.

AREAS OF STUDY & ASSESSMENT

You will develop knowledge and skills to help you understand the opportunities for, and effects of, leading a healthy and active lifestyle. There is a large content of scientific exploration and the way in which your body responds to exercise. You will also study how we learn skills and the impact of psychological factors on performance. In addition, you will learn about the evolution of sport and society and the technological developments. You will be given the opportunity to build on your experience and improve personal skills/techniques in a sport of your choice to improve performance.

70% Theory	40% physiological components, (2.5 hour examination) 30% psychological and social (2 hour examination)
30% Practical	15% performance grade (in one sport) 15% performance analysis (coursework)

WHAT OUR STUDENTS SAY

PE is a great A level choice as it is a challenging subject that tests not only your practical ability and fitness but also your scientific understanding of the human body. A level PE is incredibly interesting and can lead to many future career pathways such as sports science, physiotherapy, sports training/coaching and sports psychology. I thoroughly enjoy every lesson and would advise anyone who enjoys or is looking into sports or even bio-science to consider A level PE as one of their subjects.

- A Level

OVERVIEW

Physicists look for all the hidden laws that explain why all matter (that's every physical thing) and energy in the known universe exists, where it comes from and how it behaves the way it does. Physicists use the laws they uncover to develop new materials, machinery, and technology to improve our lives and help us explore the universe further, from computers to telescopes and spacecraft.

On this course you will study topics such as radiation, electricity, waves and mechanics.

WHY CHOOSE THIS?

Physicists use the laws they uncover to develop new materials, machinery, and technology to improve our lives and help us explore the universe further, from computers to telescopes and spacecraft.

Physics will help you to build up your problem solving, research, and analytical skills. With these skills you'll be able to test out new ideas plus question and investigate other people's theories, which is useful for any kind of job that involves research or debate.

Physics is a seriously useful subject for the majority of STEM (Science, Technology, Engineering & Maths) careers and you'll find physicists everywhere, in industry, transport, government, universities, the armed forces, the secret service, games companies, research labs and more.

WHAT OUR STUDENTS SAY

I have recently started studying physics and it has been wonderful. The teachers have been really helpful and the lessons are great. I have really developed my maths skills and have been fascinated by learning about the variety of particles that exist.

AREAS OF STUDY & ASSESSMENT

Year 12 units:

Measurements and their errors

Particles and radiation

Waves

Mechanics and materials

Electricity

Year 13 units:

Further mechanics and thermal physics

Fields and their consequences

Nuclear physics

Optional unit: Usually astrophysics or medical physics

This course is 100% examination at the end of Year 13. You will also complete 12 required practicals which will be assessed within the examinations. There are five practical competencies (CPAC) that you have to have mastered by the end of the course. Your teacher will monitor your work in practical lessons and assess you against the exam board criteria. You will be expected to prepare for each lesson by studying the theory before each lesson and your teacher will assess you at key points throughout the course.



AQA

PSYCHOLOGY

- A Level

OVERVIEW

Psychology is the scientific study of the mind and behaviour. Psychology is an intriguing subject that aims to provide students with knowledge of the human mind and how it is correlated with our behaviour. Psychology is seen as a subject having a strong emphasis on scientific investigation and observation, so it provides a useful link between arts and science subjects. A level psychology will allow you to think about human behaviour from a number of viewpoints. You will be challenged to combine rigorous scientific and mathematical work with research and discussion. You'll get plenty of chance to get involved in debating theories and evidence, including voicing your opinions in writing on current affairs, as well as the fundamentals of the subject. Over your two years studying A level psychology you will gain an insight into the causes of a wide variety of human behaviours, their impact on daily lives and the science that has evolved around them.

WHY CHOOSE THIS?

A level psychology is a helpful introduction to the subject for those considering a career in this field. In addition to progressing to a pure psychology degree, this course is a well-respected starting place for a career as a psychologist, counsellor or even criminologist. Psychology is also a useful second science for those choosing to study science.

Students have had the experience of taking part in research which provides them with hands on experience on the research methods used. There are also opportunities for students to attend a number of different educational talks which are delivered by some of the famous and influential names in psychology, and visit London Science museum.

AREAS OF STUDY & ASSESSMENT

The course addresses questions relating to the causes and treatment of mental illness, human behaviour and the mechanisms and processes of the mind. You will focus on some revolutionary theories and research which have shaped our understanding of the subject. You will also study how we conduct psychological investigations.

You will study:

- Social influence
- Memory
- Attachment
- Psychopathology
- Approaches in Psychology
- Bio-psychology
- Research methods

You will be supported throughout your studies via school support sessions as well as revision sessions which allow you to develop examination techniques. Students need to be able to use critical thinking skills and be able to work independently.

You will sit three papers at the end of Year 13.

Paper 1 - Introductory topics in psychology (33.3%)

Paper 2 - Psychology in context (33.3%)

Paper 3 - Issues and options in psychology (33.3%)

WHAT OUR STUDENTS SAY

Psychology is an incredibly interesting topic to those who constantly wish to learn more about how and why we function as we do. The A level lays the foundations of what is understood in psychology which gives you a level of knowledge that will guide you into any further education in the field. Regardless of whether you have taken it at GCSE or not, this subject always has more to learn and is thus ideal if you, like me, are someone who wishes to be constantly expanding their knowledge. The course at LSFC is great, I believe this course needs to have structure and be organised to a fairly extreme extent; this is exactly what it is here. Highly recommended!

ROCK SCHOOL MUSIC PRACTITIONER

- RSL Level 3 Extended Diploma

OVERVIEW

The music practitioners qualification is a flexible, vocational music course that aims to train you in the skills you need for a career in the music industry. It offers a wide variety of modules for you to study. You will be supported with your exploration of these modules whilst also developing transferable and functional skills which are embedded in your lessons to help you achieve your ambitions in the music industry and to help you to step up to higher education.

WHY CHOOSE THIS?

With the skills you learn on this course, you will have an excellent foundation to allow you to take up any role in the music industry (further specific training may be required). The music business is a vast, vibrant and varied industry, employing huge numbers of people and generating billions every year globally.

These are several pathways available including music technology, performance, business and composition. We will help you decide which is best for you and guide you on your journey. Through studying the various modules you will develop the skills required for your desired career.

AREAS OF STUDY & ASSESSMENT

Over the two years students will complete 13 units of study, two of which are externally assessed and examined. Other units are internally assessed and moderated externally.

Unit 391: Composing Collaboration and Recorded Music Performance

Unit 387: Rehearsal Skills and Live Music Performance

Unit 349: Planning for a Career in Music

Unit 316: Understanding Musical Styles

Unit 353: Music Events Management

Unit 322: Musical Instrument development

Unit 304: Composing Music (Styles)

Unit 375: Radio Podcast Productions

Unit 307: Composing for film and Documentary

Unit 321: Evolution of the Record Industry

Unit 376: Music Video Production

Unit 310: Composing Lyrics

Unit 308: Composing for Interactive Media

WHAT OUR STUDENTS SAY

Studying music at Lordswood helped me in many ways. Not only did it give me the vital skills to enable me to carry on studying music at university, but it also gave me confidence in my ability. The teachers are always incredibly supportive, and friendly which makes lessons really fun! I found that the interests of each student were nurtured, and we were encouraged to explore whatever avenues interested us. Learning music at Lordswood is not only fun, but it's done in an inclusive and supportive environment. This really aids improvement and development at all levels.

SOCIOLOGY

- A Level

OVERVIEW

In sociology you will look at a range of issues across education, family, media and crime. You will look at issues like:

- Why are males more likely to commit crime than females?
- How are certain groups targeted by the police?
- How is the media controlled by wealthy businesses?
- How does the education system teach us to conform in society?
- In what ways is the idea of childhood disappearing?

WHY CHOOSE THIS?

Sociology encourages you to think about your role in society and how your identity is shaped by age, ethnicity and social class. You will examine interactions on a small scale and a large scale, gaining a greater understanding of how people interact in different ways in different social situations. This will help understand how British society operates and why inequalities develop in society.

Former students have gone on to study a wide range of subjects including criminology, politics, international relations, psychology and social policy. Sociology is also studied as part of the training for many jobs including business management, advertising, journalism, prison work, teaching, law, nursing, the police and social work.

AREAS OF STUDY & ASSESSMENT

Education

- Different theoretical explanations of the role of education
- Reasons for differences in achievement in education
- The impact of political policies on education

Family and households

- Different theoretical explanations of the role of the family
- Reasons for differences in family types and trends in the family
- The impact of political policies on the family

Crime and deviance

- Different theoretical explanations of criminal behaviour
- Reasons for differences in offending rates amongst different groups in society
- The impact of the media and globalisation on crime

Media

- Debates around the importance of media ownership
- Debates around different ways the media represents different groups in society
- Different explanations of how the media influences society

All assessment is exam based. There are three examinations, each two hours and each worth 33% of the final grade.

Paper 1- Education, theory and methods

Paper 2- Family and Media

Paper 3- Crime & Deviance, theory and methods

WHAT OUR STUDENTS SAY

Studying A level sociology has allowed me to gain a greater insight into how society functions and what I find most enjoyable about studying it is that I am able to look at events happening around the world and question why they are occurring. The fact that we study a variety of topics such as education, family, crime and mass media has given me a rounded and objective view of how we use and operate within these spheres. I would recommend studying A level sociology because it builds up core skills such as critical thinking, being able to interpret information and apply it to everyday situations, as well as developing independent learning and communication skills.

SPANISH

- A Level

OVERVIEW

The Spanish A level qualification has been developed to inspire all students who have an appreciation of the language, literature, film and culture of the Spanish-speaking world. This course features familiar and popular themes as well as content that provides clear links to some of the most fundamental and interesting aspects of the culture of the target language country and communities.

WHY CHOOSE THIS?

The aim of the A level modern language course is to help you to develop an interest in speaking a foreign language, to gain awareness of the need to speak foreign languages, to appreciate the nature and diversity of different cultures and people and to acquire knowledge, skills and understanding for practical use, further study and employment.

Employers often require an understanding of other cultures, good oral communication skills and the discipline and work ethic that learning a language entails. Languages can lead to a wide range of professions, for example: interpreting, translating, working in public and private businesses, law, engineering, politics, computing, travel and tourism, teaching and journalism. Languages are an invaluable skill to have; they are key to the exciting multinational world we live in!

AREAS OF STUDY & ASSESSMENT

Year 12

Theme 1: Social issues and trends: Evolving society in Spain

Theme 2: Political and/or intellectual and/or artistic culture in the Spanish speaking world

Year 13

Theme 3: Social issues and trends: Immigration and the Spanish multicultural society in Spain

Theme 4: Political and or intellectual and/or artistic culture: The Franco dictatorship and transition to democracy

Paper 1: Listening, reading and translation

2 hours

40% of the qualification (80 marks)

Paper 2: Written response to works and translation

2 hours and 40 minutes

30% of the qualification (120 marks)

Paper 3: Speaking

Internally conducted and externally assessed

Total assessment time: between 21 and 23 minutes (including 5 minutes' preparation time)

30% of the qualification (72 marks)

WHAT OUR STUDENTS SAY

If you are looking for a diverse and engaging A level option, then studying languages is for you! You will develop invaluable skills that complement and aid your progress in other subjects - communication skills, analytical thinking and the ability to work independently. The great thing about languages is that they encompass so much, one day you could be learning about the debate surrounding immigration and the next looking at key historical moments. What's more, languages students are sought after by universities and employers and the careers options are endless. From translation and interpreting, to business and marketing, to teaching and even careers abroad!

- National Extended Certificate
- National Extended Diploma

OVERVIEW

Within the PE department, we offer a vocational BTEC course which is taught by energetic, enthusiastic and experienced members of staff. Lessons are a combination of both practical and theoretical components that provide you with the opportunity to learn about the human body and how it adapts to exercise, to plan and deliver physical activity sessions, to understand the impact of sport upon society and to explore the impact that sports psychology can have upon elite performers.

WHY CHOOSE THIS?

Do you have a genuine interest in sport? Do you enjoy playing sport? Do you have a good general sporting knowledge and keep up to date with sport in the media? Have you previously studied GCSE PE or BTEC Sport? Do you want to pursue a career within the sports industry? If you have answered 'yes' to any of the previous questions, then read on!

The BTEC in Sport allows you to challenge, explore and develop your knowledge in a range of different topics within the sports industry. The independent work structure provides students opportunities to progress in the area of sport and physical education that is of the greatest interest to each individual student.

WHAT OUR STUDENTS SAY

Doing the BTEC Sport course has helped me to develop my knowledge in a wide range of topics within the sports industry. It has also helped my own practical performance, as there are so many things that I can apply to my own training and performance.

The teachers provide plenty of support and guide us towards the highest grade that we think we can get. I'd recommend it for anyone who wants to specialise in sports.

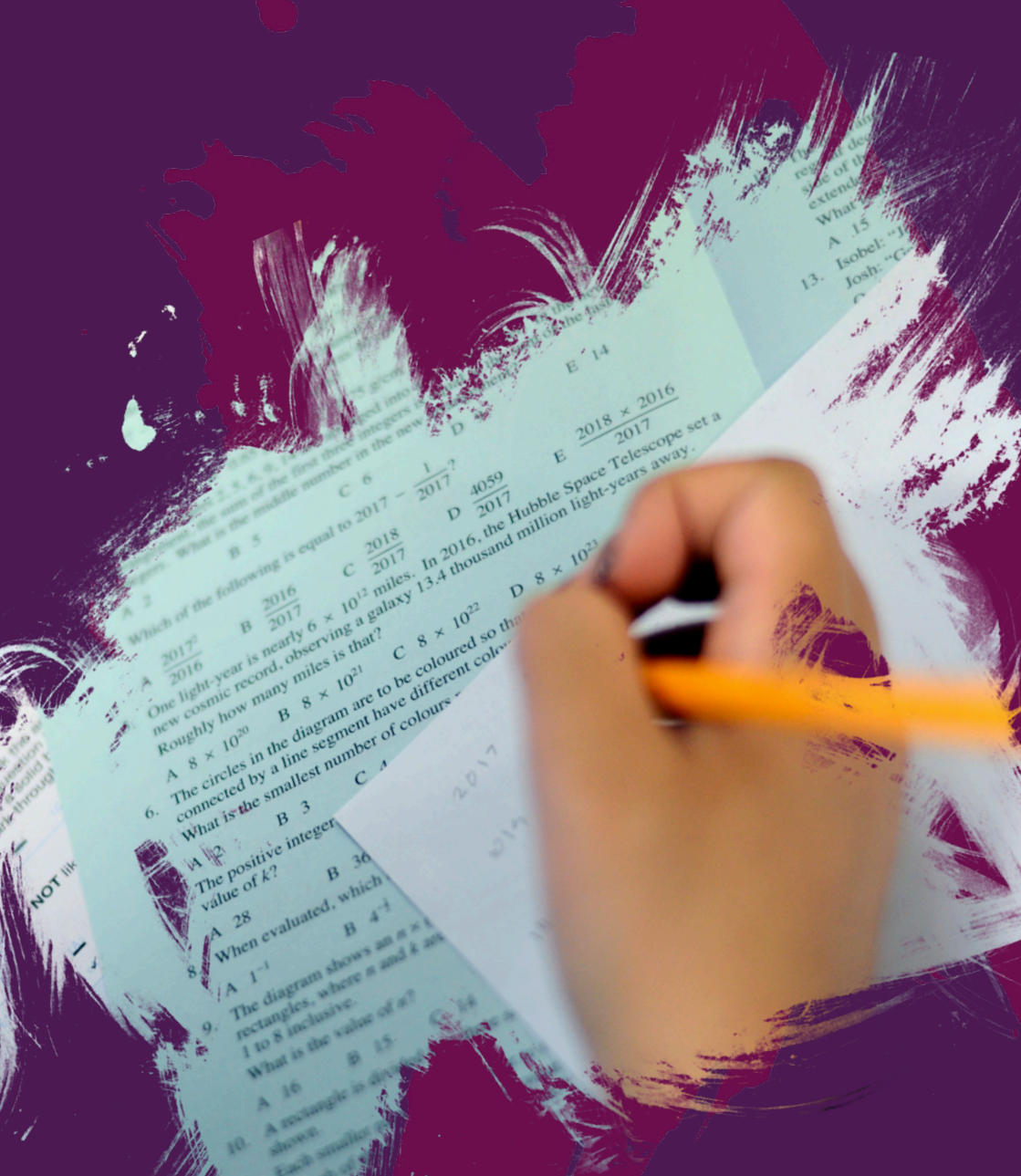
AREAS OF STUDY & ASSESSMENT

The qualification offers a wider range of units which learners can explore through practical and theory sessions. These include nutrition, which enables learners to access up to date public health guidelines on nutritional requirements, health screening and fitness testing, which provides learners with the opportunity to investigate a range of laboratory and field-based fitness tests, sports leadership and injuries in sport.

Extended Certificate
Four units, two externally assessed
One two hour examination in summer of Year 12

Extended Diploma
14 units, four externally assessed
One two hour exam in summer of Year 12

Please note that all external assessments only have the option of one re-sit. Failure to pass any re-sit would result in a failure of the course.



MATHEMATICS & ENGLISH RESITS

- GCSE resit programme

We will be offering a number of options for students who need to re-sit their English and mathematics qualifications. Students can complete their English and mathematics qualifications alongside a one year foundation programme to include work experience, or a two-year level 2 programme. Foundation programme students will then have the opportunity to continue on a level 3 programme at LSFC. Further details will be added to the LSFC website.

A young woman with long dark hair is looking down at a smartphone. Behind her head is a large, white, hand-drawn question mark. The background is a solid dark blue. The text "WHAT NEXT?" is written in white, bold, sans-serif capital letters across the lower part of the image.

WHAT NEXT?

APPLICATION PROCEDURE

WE VERY MUCH HOPE YOU WILL JOIN US!

VISIT US

To discover more about the courses you are interested in and life at Lordswood Sixth Form Centre, come and visit us! Contact the Sixth Form Team to arrange a date and time.

APPLY ONLINE AT

Visit our website and click the 'apply online' button. Fill in the online application form and send it off. The closing date for applications is 16th February 2018.

ATTEND FIRST INTERVIEW

We will send you a letter inviting you to attend an initial interview. This first meeting will allow us to assess your suitability for the courses in which you are interested, as well as being a great time for you to ask us any questions you may have. You will need to bring a copy of your most recent results to the meeting.

RECEIVE YOUR OFFER

You will find out whether or not your application has been successful, as well as the conditions of your offer, within two weeks of your interview.

ATTEND INDUCTION DAY

Once GCSEs are over, you will be invited for an induction day at Lordswood Sixth Form Centre. This day is designed to give you all the information you'll need to take up your place as well as being a real insight into life here at LSFC.

ATTEND SECOND INTERVIEW

You will be sent an interview slot for after your GCSE results so we can finalise your programme of study based on your actual results.

START YOUR PROGRAMME OF STUDY!

After this final step, it's time for you to take your place at Lordswood Sixth Form Centre!

NB: If you currently study at Lordswood Girls' School, you will have IAG meetings to help with your choices and your application.

WHERE TO FIND US



Lordswood Sixth Form Centre,
Lordswood Girls' School,
Knightlow Road,
Harborne,
B17 8QB

Lordswood Sixth Form Centre is located in Harborne, Birmingham near to the Hagley Road. Students attend the sixth form from a wide catchment area including Rubery, Rednal, Wolverhampton and Dudley. The sixth form centre is well served with regular buses from Birmingham City Centre along the Hagley Road and the circular number 11 drops students conveniently a few minutes walk from the LSFCI entrance.

FREQUENTLY ASKED QUESTIONS

I'VE MISSED OPEN EVENING. CAN I STILL VISIT THE SIXTH FORM?

Yes – please contact the Sixth Form Team and we can arrange a time for you to come in for a meeting and a tour.

IS THERE ANY FINANCIAL SUPPORT GIVEN TO HELP WITH MY STUDIES?

The sixth form student bursary is offered to students who meet the criteria. Full information about how to apply for the bursary is given at our induction day in July and is available on the website.

I'M NOT SURE WHAT SUBJECTS I WANT TO STUDY. AND WHAT IF I CHANGE MY MIND?

You will need to select subjects when you apply to us to help us to plan our curriculum and staffing. If you change your mind you should let us know. There will be a transition period at the start of Year 12 where there will be an opportunity to change your subjects if they are not right for you.

I'M WORRIED I WON'T GET THE GRADES FOR MY CHOSEN COURSES. WHAT NEXT?

We meet with all students after the GCSE results in August to check that you have the requirements for your chosen courses. If you have not met our requirements we can usually offer you an alternative programme of study.

I DIDN'T ATTEND LORDSWOOD FOR MY LOWER YEARS EDUCATION. WILL I BE THE ONLY ONE?

We are proud to say that students from a very wide range of schools choose Lordswood Sixth Form Centre due to our results and personal recommendations. We have over 50 'external' students each year and they soon become part of the Lordswood family. We are a friendly and supportive Sixth Form!

I AM A LATE APPLICANT. IS THERE STILL A CHANCE I CAN GET A PLACE AT YOUR SIXTH FORM?

Please get in touch and we can let you know if we still have places in the sixth form and for your chosen courses.

I HAVE PREVIOUSLY STUDIED ABROAD AND MY QUALIFICATIONS ARE FROM A DIFFERENT COUNTRY. WILL YOU BE ABLE TO ACCEPT ME?

We need to be satisfied that your qualifications are the equivalent to GCSEs. Provide us with as much information as possible about examinations you have taken and the results achieved. We will consider these on a case by case basis.

Any other questions? Ask for one of the Sixth Form Team on 0121 429 2838 or email sfc-enquiry@lordswoodtrust.co.uk

TOP 10 REASONS TO CHOOSE LSFC



**A BRAND NEW
SIXTH FORM
BUILDING**



**EXCELLENT
RESULTS**



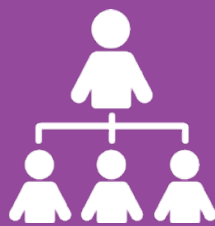
**BROAD
CURRICULUM**



**CULTURE
OF HIGH
EXPECTATIONS**



**PERSONALISED
APPROACH**



**CREATING
LEADERS OF
THE FUTURE**



**DEDICATED
TEACHERS**



**OUTSTANDING
PASTORAL
CARE**



**TAKING SPORT
SERIOUSLY**



**PREPARING YOU
FOR THE WORLD
OF WORK**

WHY WILL YOU COME TO LORDSWOOD SIXTH FORM CENTRE?

DISCLAIMER

Every effort has been made to ensure the accuracy of the information in this prospectus. Any changes to our course provision or entrance requirements will be updated on the Lordswood Sixth Form Centre website.

"Starting at Lordswood Sixth Form Centre, coming from a different secondary school, was a very new experience for me. Although it was different to what I was used to, all of the students and teachers were so nice and approachable which made it much easier to feel welcome at the school."

"Many opportunities are offered to sixth form students to help develop skills to prepare us for the future, as well as extra curricular activities to make a positive difference to the school as a whole as well as to the local community."

"Since joining the community at Lordswood Sixth Form Centre in Year 12, I have found it easy to settle into the friendly environment with the help of the staff and peers. The teachers are also very supportive and motivating at all times."

"I chose to come to Lordswood Sixth Form Centre because I found out that it had high quality teaching and all the staff are willing to provide support to individuals, which I think is important if you are moving into a new environment."

"You will find that we are a diverse sixth form, which has high quality and supporting staff. It was very different for me when I first started in September 2016 because I came from Lordswood Boys' School, which is an all boys school. I was able to adapt to the sixth form's environment very quickly and made many new friends mainly because of how the sixth form makes everyone feel that we are part of one big family."

LSFC students



**READY TO MAKE AN APPLICATION?
APPLY VIA THE LORDSWOOD SIXTH FORM CENTRE WEBSITE**

LORDSWOOD SIXTH FORM CENTRE, KNIGHTLOW ROAD, HARBORNE, B17 8QB
0121 429 2838 WWW.LORDSWOODSIXTHFORMCENTRE.CO.UK SFC-ENQUIRY@LORDSWOODTRUST.CO.UK